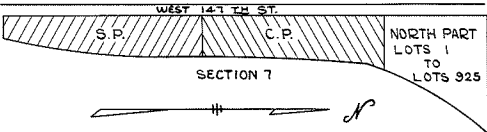
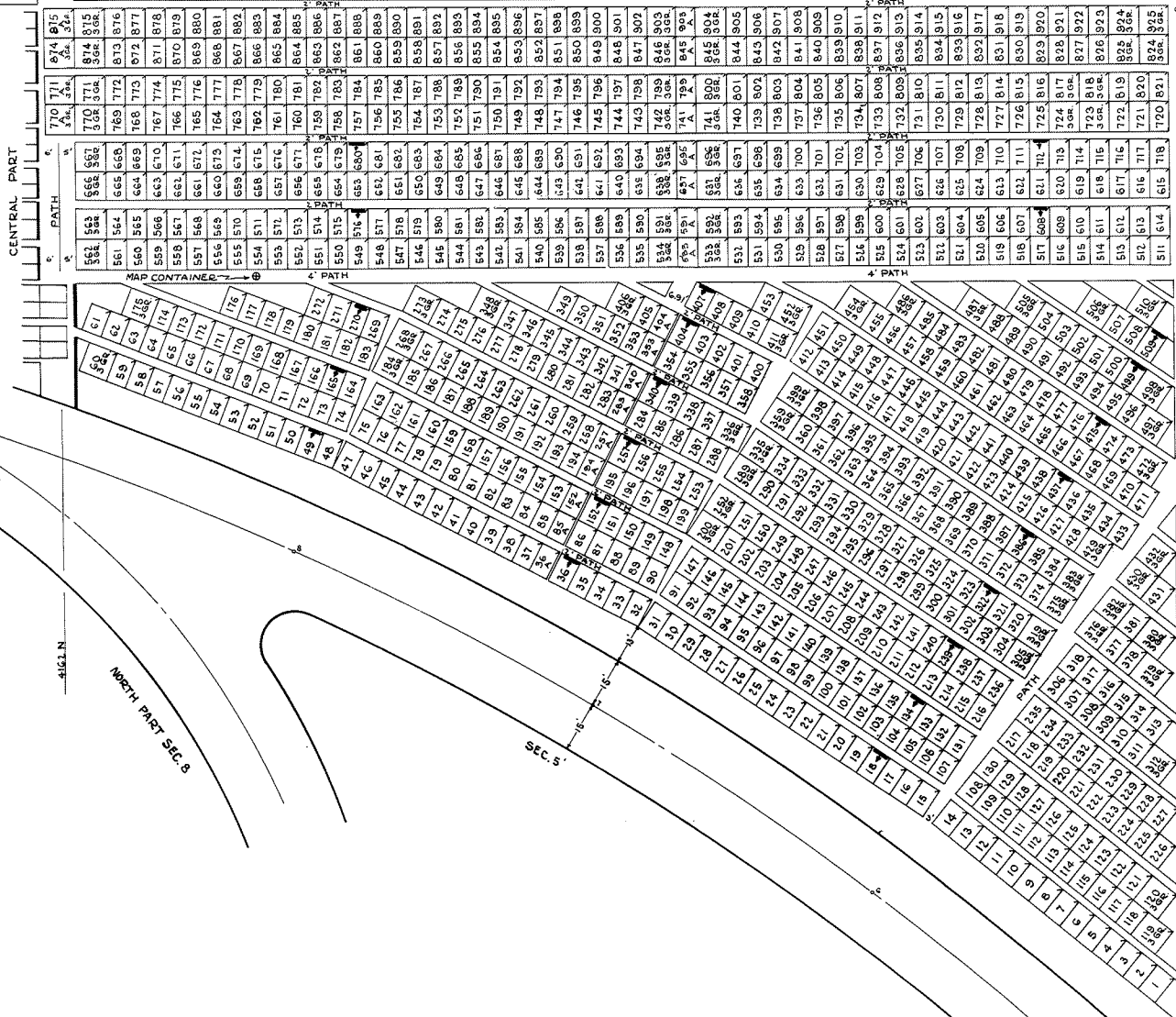


11800 E. & W. 141 TH

PL 7



THE LOT NUMBER IS FOUND IN THE UPPER RIGHT HAND CORNER OF LOTS AS YOU FACE THE SECTION AND ARE INDICATED THUS  $\nearrow$

LOCATION OF GRAVE MARKERS SHOWN THUS  $\blacktriangledown$  ARROW INDICATES DIRECTION GRAVE MARKERS WILL FACE.

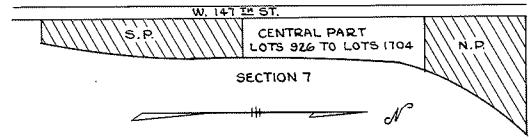
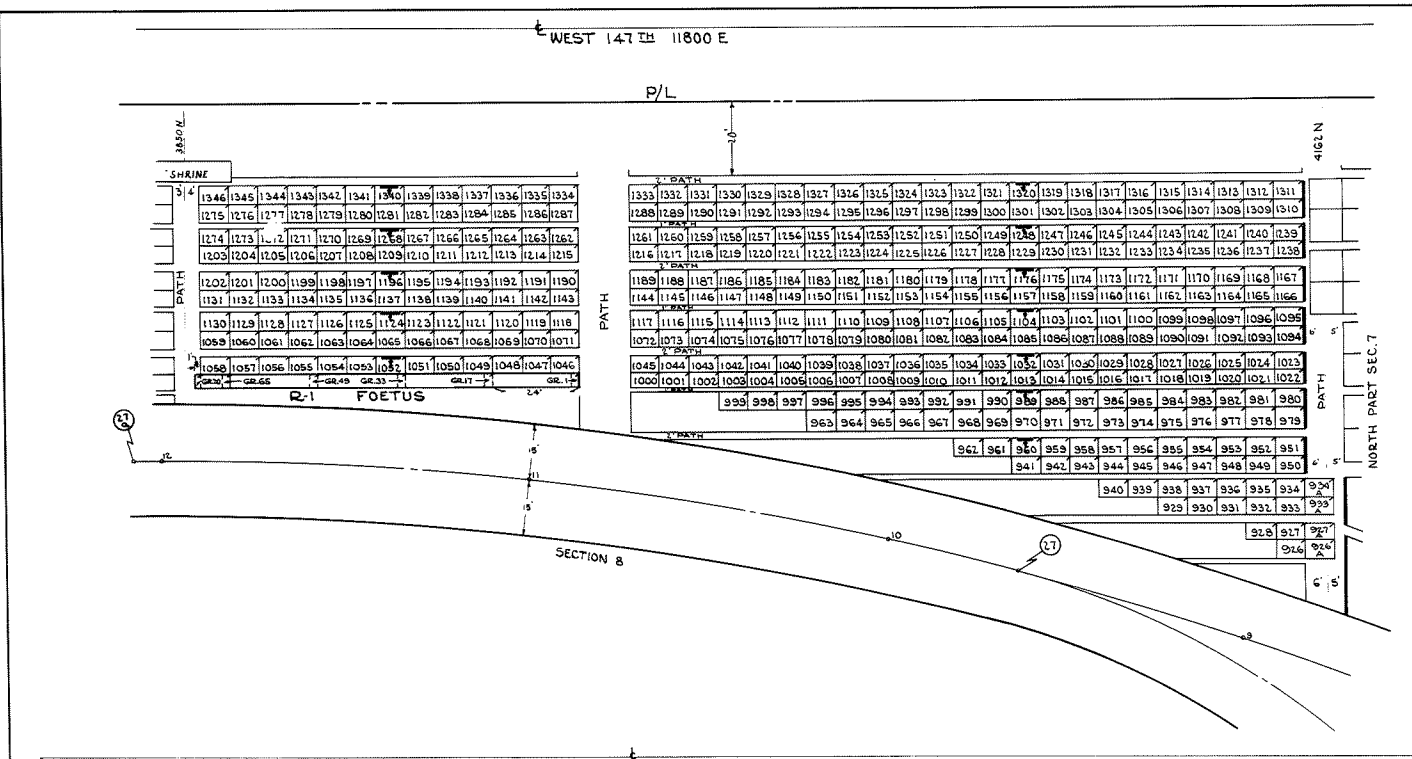
ALL LOTS ARE 2 GRAVE LOTS EXCEPT WHERE OTHERWISE NOTED.

ALL 2 GRAVE LOTS ARE 6'x9'  
3 9'x9'

2 GRAVE LOTS = 869  
3 GRAVE LOTS = 77  
TOTAL = 946

**HOLY CROSS CEMETERY**  
CLEVELAND, OHIO  
NORTH PART OF  
**SECTION 7**  
Scale 1"=20' G.C.A. 6-15-49

REV. ① 2-3-04  
REV. ② 4-1-04  
REV. ③ 11-11-00  
REV. ④ 11-6-00



THE LOT NUMBER IS FOUND IN THE UPPER RIGHT HAND CORNER OF LOTS AS YOU FACE THE SECTION AND ARE INDICATED THUS [arrow pointing to corner]

LOCATION OF GRAVE MARKERS SHOWN THUS [arrow pointing to marker symbol]

ARROW INDICATES DIRECTION GRAVE MARKERS WILL FACE.

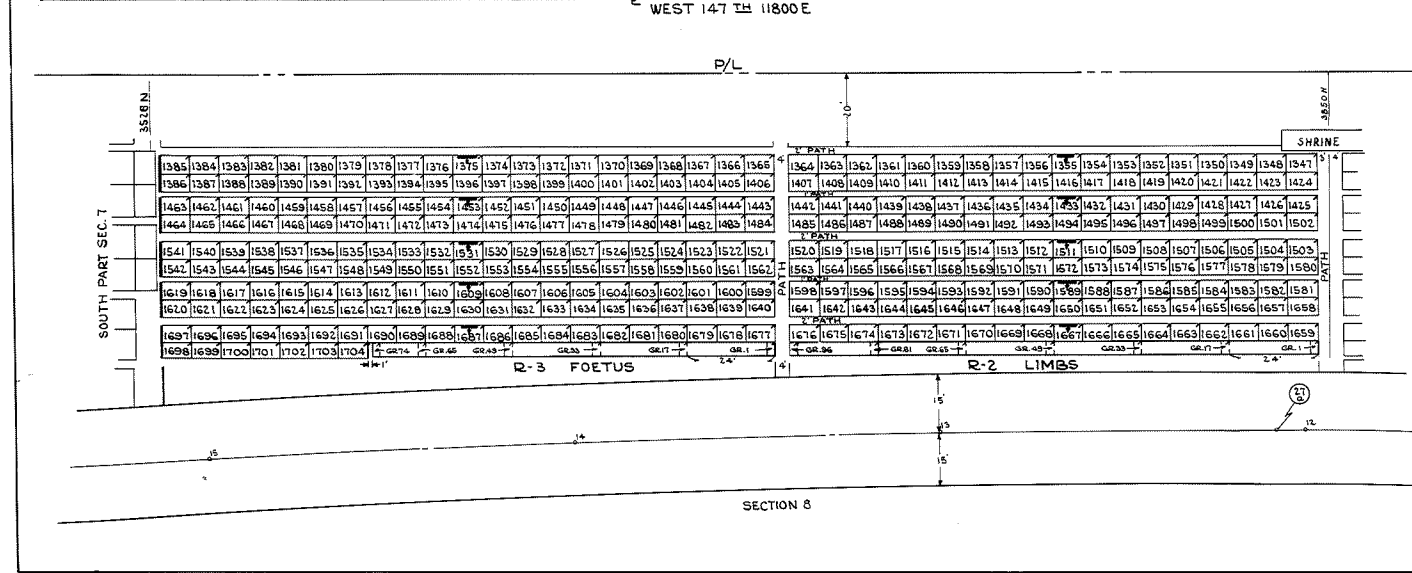
ALL LOTS ARE 4 GRAVE LOTS 8'x5' (CONSECATED BABIES)

ALL GRAVES ARE 2'x5'

NOTE

IN ALL RANGES THE GRAVE MARKERS ARE FOUND IN THE UPPER RIGHT HAND CORNER AS YOU FACE THE RANGE AND ARE INDICATED THUS [arrow pointing to corner]

ALL RANGE GRAVES ARE 18 INCHES BY 48 INCHES



**HOLY CROSS CEMETERY**  
 CLEVELAND, OHIO  
 CENTRAL PART OF  
**SECTION 7**  
 Scale 1"=20' G.C.A. 6-20-49  
 Rev. 11-7-50

